



Incident: Grounding of Donald Searle: **Location:** Lulworth Cove

June 2022

Summary of incident:

Donald Searle was anchored in Lulworth Cove. The anchor was dropped, the drag alarm on the chart plotter was set at the point of drop. A visual assessment of the area noted significant points to monitor vessel movement.

The anchor started dragging and main engine started. The crew were quick to notice and respond to the dragging. The engine was started immediately, and the crew prepared the windlass to manually raise the anchor. The anchor and handles are not kept in the windlass on deck as it is a trip hazard, so it had to be prepared before the anchor was raised. Before raising began, the rudder momentarily touched the seabed in approximate position 50.37.044N – 002. 14.724W (South-eastern Edge of cove). The anchor was then reset, and the vessel remained in position for the remainder of the day.

The conditions were suitable for anchoring; warm, sunny day, no wind flat calm.

No injuries or damage reported.

What lead to the incident?

- Poor holding in Cove
- Anchorage was busy meaning that vessel was on South-eastern Edge of Cove

Key lessons learned:

- Consider an alternative anchorage if the initial one chosen is busy
- Leave the anchor windlass ready for immediate operation
- The incident was not logged
- As a commercial vessel the occurrence is considered a grounding or a stranding, it is therefore reportable to the MAIB.

Key recommendations:

- Afterguard to be reminded that all touches need to be recorded in the log and reported to the office as soon as is practicable.
- Anchoring is not to be discouraged; skippers to continue to make dynamic risk assessment prior to anchoring taking position, room, conditions, vessel, and manning into consideration.
- Afterguard to share experiences of various anchorages with each other as appropriate.

Follow on actions:

- 1) Report submitted to the MAIB.
- 2) Project Director to liaise with MAIB and share any recommendation or follow up actions as appropriate.

Rona Sailing Project Incident Report Summary: #2

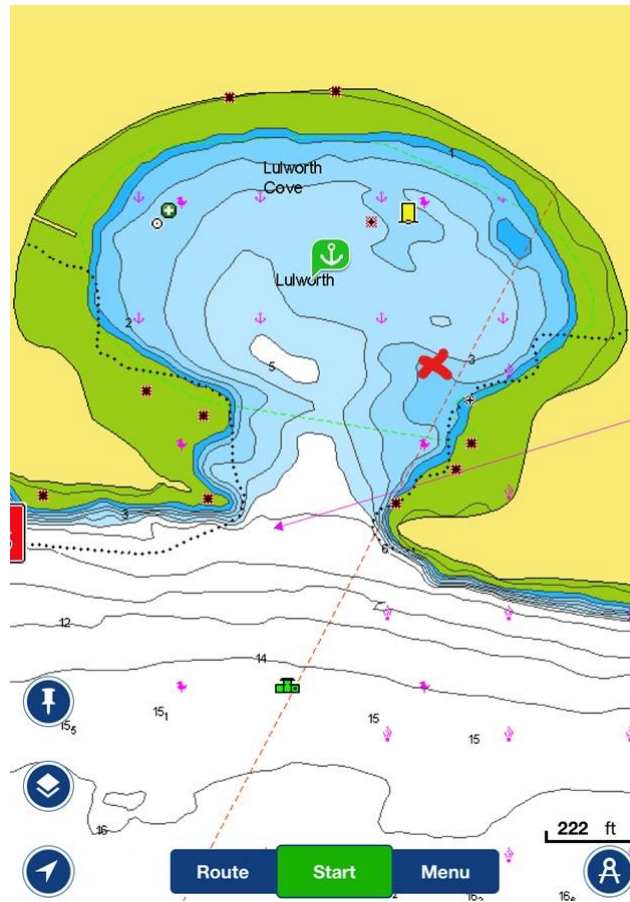


Figure 1 RED X, where Donald Searle was anchored.