



Incident: Grounding of Donald Searle at anchor	Location: Lulworth Cove	July 2022
---	--------------------------------	-----------

Summary of incident:

At 08h28am on the morning in question, Donald Searle anchored in Lulworth Cove in a depth of of 3.5-4.0m, with 20m of chain paid out. The tide was rising and the wind was force 2-3 from the NW. at 08h30 the boat swung on the anchor into shallow water of c.2.5m. Donald Searle's Draught is 2.59m.

What lead to the incident?

Consideration was not given to the potential of the vessel to swing as it was expected to lay at anchor to the NW. The

Was it avoidable?

It could have been avoided if consideration had been given to the potential for the boat to swing into shallow water of if the vessel anchored more in the centre or the cove/further away from the shallow water and coastline.

Key lessons learned:

Even though the wind was coming from the NW, the vessel still swung.

The vessel was anchored too close to the coastline so the swinging effect led to the touch.

It was early in the morning and there could have been a katabatic wind from the cliffs. The almanac however, states there is good shelter 'but occasionally a squally katabatic wind may blow down from the surrounding cliffs at night'.

Key recommendations:

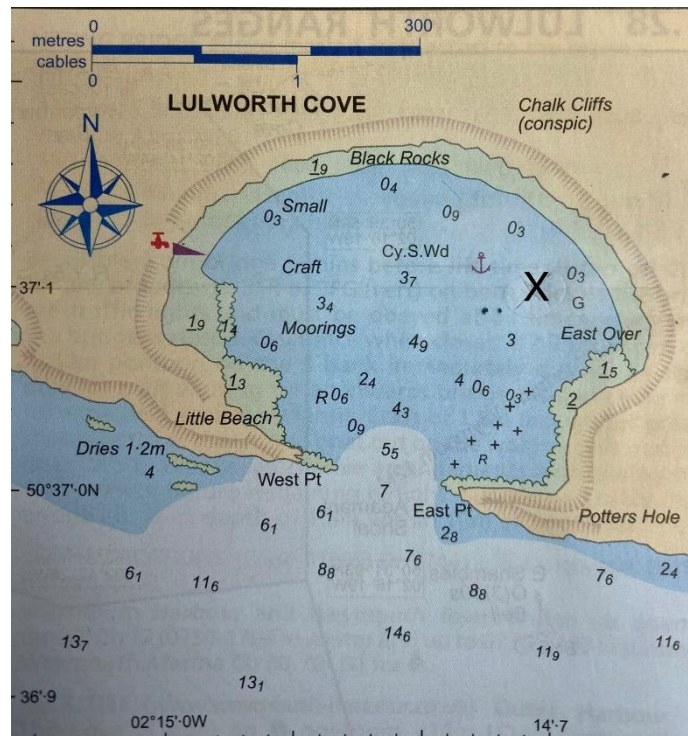
When anchoring in confined areas, AG to consider the potential for and effect of the vessel swinging.

Anchor in deeper waters in the centre of the cove.

Follow on actions:

PD to liaise with the MAIB as it is a reportable incident.

Incident Report # 4 Donald Searle grounding at anchor in Lulworth Cove



X: Donald Searle's position when anchored.